



# Fitchburg

## Commuter Rail

Line Improvement Project

*Presented by:*  
The HNTB Team

January 12, 2012





# Program Definition/Goals

## One Program/Multiple Projects:

\$159M Small Starts/Rt 62 Bridge (FTA/State)

\$ 10M CPF 43 (ARRA)

\$ 42M Double Tracking (ARRA/EOHED)

\$ 59M Wachusett Extension (TIGER)

\$ 7M N. Leominster Parking (FTA/State)

**\$277M Investment**

**Improve  
Performance**

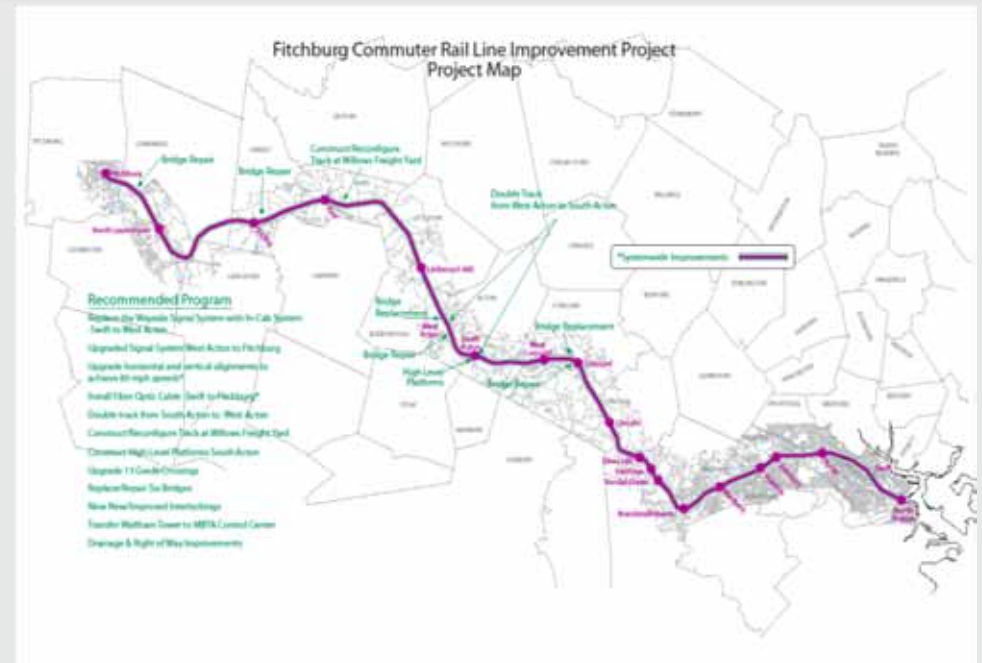


Increase Reliability/Access.  
Decrease Travel Time  
Extend Service



# Program Construction Schedule

- **CPF 43**  
Fall 2009 – Jan 2012
- **Double Track**  
Spring 2010 - Spring 2013
- **Small Starts/Rt.62**  
Jan 2012 – Dec 2014
- **N. Leominster Parking Garage**  
Spring 2012 – Fall 2013
- **Wachusett Extension**  
Fall 2011- Dec 2013





# CPF 43

## Universal Interlocking/Freight Switching Lead







# Double Track

## 8 Mi. of Double Track/New Littleton/495 Station

- Design & Permitting Complete
- Force Account Construction – MBCR
  - Track under construction
  - Signal Construction – ready to go
    - Long lead materials ordered
- Littleton Station Construction
  - Contractor NTP Jan 2012 – complete Spring 2013
  - Parking Complete (\$2M EOHED funding)





# Littleton Station Parking Expansion



- Property Acquired By MBTA
- Upper Parking Lot – Construction Complete



# Station Architecture

## In Context View from Foster St.

The three dimensional model has been inserted into a photo of the existing site. The image shows the proposed ramp/bridge in context. The existing parking lot is to the right, behind the trees.



Lozano, Baskin, and Associates, Inc.





# Station Architecture

In Context View from East End of Platform toward Foster St.

This image shows the east end of the platform and the ramp/bridge system in relation to the embankment between the right of way and the existing parking lot.



Lozano, Baskin, and Associates, Inc.





# Small Starts Project

- New Signal System - Boston to Acton
- Upgrade track alignments to achieve 79 MPH
- 1 Mi double track South Acton to West Acton
- Reconfigure track at Willows Freight area
- Dual high level platforms at South Acton
- Upgrade 30 at- grade crossing warning systems
- Replace/repair seven (7) bridges
- Nine (9) new/modified interlockings
- Transfer Waltham Tower to MBTA Control Center



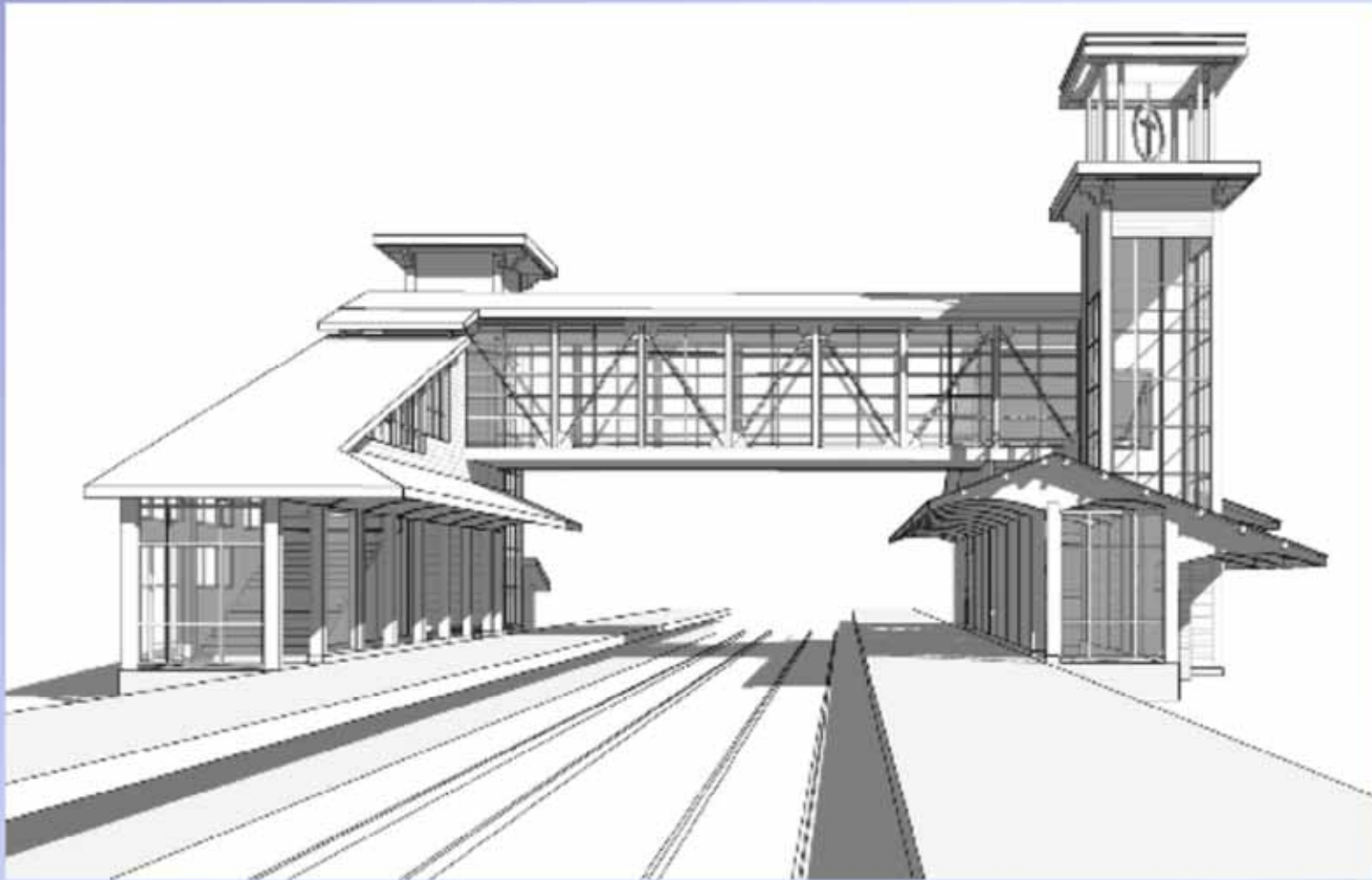
# Small Starts Update

- Funding Application submitted to FTA
  - PCGA approved September, 2011
- Permitting
  - Federal and state complete
  - Local WPA complete
- Construction Packages
  - Track & Signal – Jan 2012
  - Bridge – advertise spring 2012
  - South Acton Station – advertise summer 2012



Computer Model - Progress

# View to West



April 7, 2011



Computer Model - Progress

# North Head House



April 7, 2011



# N. Leominster Parking Garage

- Parking demands far exceed current 140 space surface lot
- Construct Garage to accommodate 350 parking spots
- Project Construction: March 2012 – Fall 2013





# Wachusett Extension

## Design

- Funding Obligated to MBTA
- Updated Permitting in progress
- Layover & Station design – 30%
- Track & Signal work ~ 30%
- Land Acquisition – Q1 2012

## Construction

- Track construction commenced – Fall 2011
- Advertise Station & Layover – Late 2012
- Substantial Project Complete - End 2013

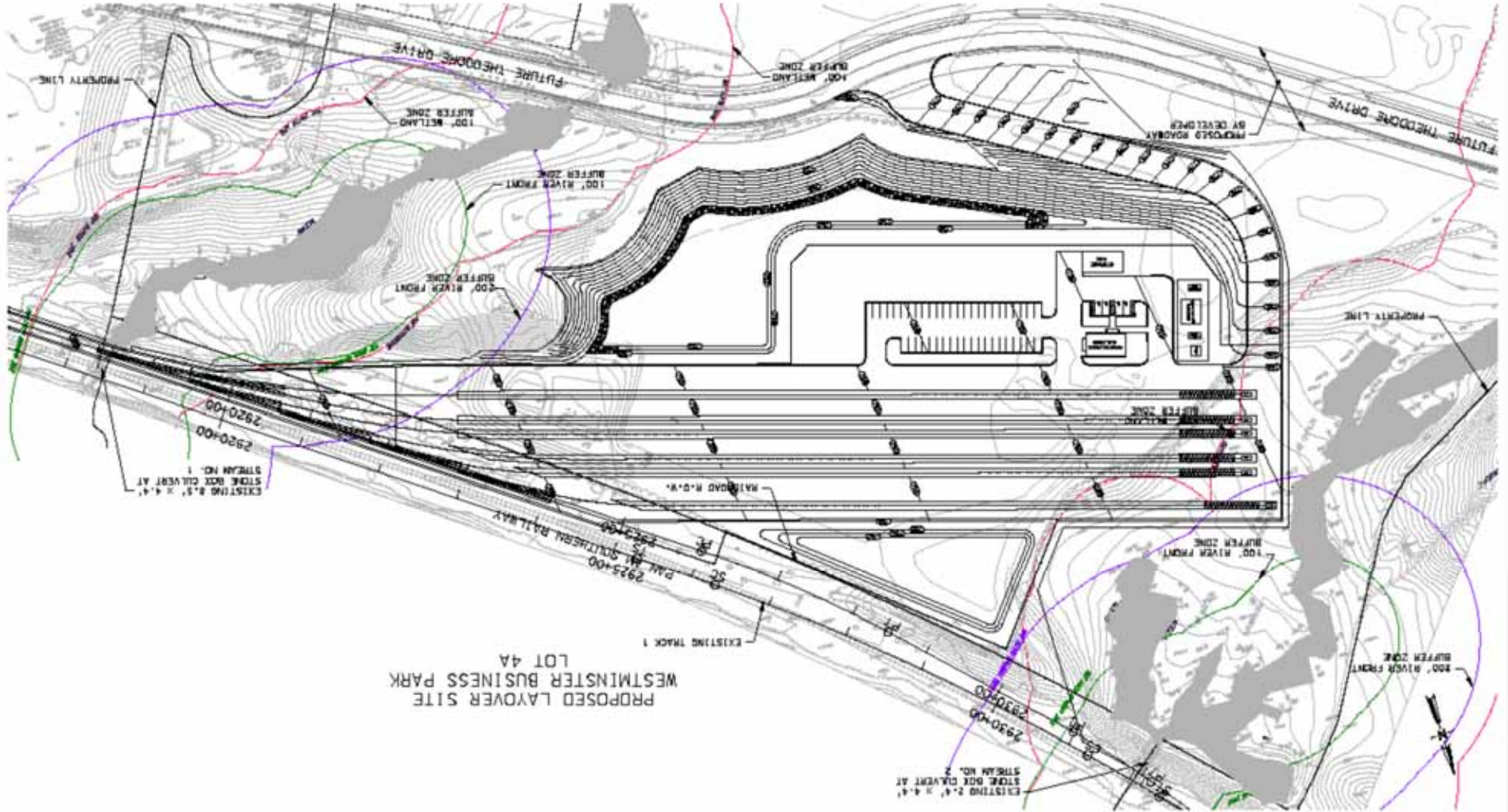








# Wachusett Layover





# Fitchburg

## Commuter Rail

Line Improvement Project

*Presented by:*  
HNTB

January, 2012