



Fitchburg

Commuter Rail

Line Improvement Project

Presented by:
The HNTB Team

January 12, 2012





Program Definition/Goals

One Program/Multiple Projects:

\$159M Small Starts/Rt 62 Bridge (FTA/State)

\$ 10M CPF 43 (ARRA)

\$ 42M Double Tracking (ARRA/EOHED)

\$ 59M Wachusett Extension (TIGER)

\$ 7M N. Leominster Parking (FTA/State)

\$277M Investment

**Improve
Performance**

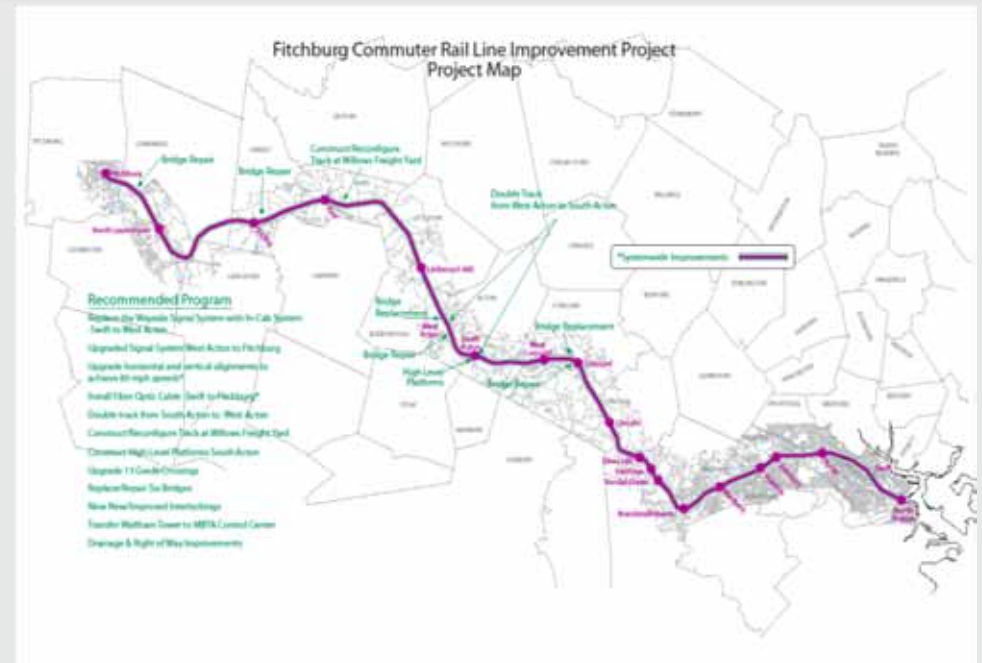


Increase Reliability/Access.
Decrease Travel Time
Extend Service



Program Construction Schedule

- **CPF 43**
Fall 2009 – Jan 2012
- **Double Track**
Spring 2010 - Spring 2013
- **Small Starts/Rt.62**
Jan 2012 – Dec 2014
- **N. Leominster Parking Garage**
Spring 2012 – Fall 2013
- **Wachusett Extension**
Fall 2011- Dec 2013





CPF 43

Universal Interlocking/Freight Switching Lead





Double Track

8 Mi. of Double Track/New Littleton/495 Station

- Design & Permitting Complete
- Force Account Construction – MBCR
 - Track under construction
 - Signal Construction – ready to go
 - Long lead materials ordered
- Littleton Station Construction
 - Contractor NTP Jan 2012 – complete Spring 2013
 - Parking Complete (\$2M EOHED funding)





Littleton Station Parking Expansion



- Property Acquired By MBTA
- Upper Parking Lot – Construction Complete



Station Architecture

In Context View from Foster St.

The three dimensional model has been inserted into a photo of the existing site. The image shows the proposed ramp/bridge in context. The existing parking lot is to the right, behind the trees.



Lozano, Baskin, and Associates, Inc.



Station Architecture

In Context View from East End of Platform toward Foster St.

This image shows the east end of the platform and the ramp/bridge system in relation to the embankment between the right of way and the existing parking lot.



Lozano, Baskin, and Associates, Inc.



Small Starts Project

- New Signal System - Boston to Acton
- Upgrade track alignments to achieve 79 MPH
- 1 Mi double track South Acton to West Acton
- Reconfigure track at Willows Freight area
- Dual high level platforms at South Acton
- Upgrade 30 at- grade crossing warning systems
- Replace/repair seven (7) bridges
- Nine (9) new/modified interlockings
- Transfer Waltham Tower to MBTA Control Center



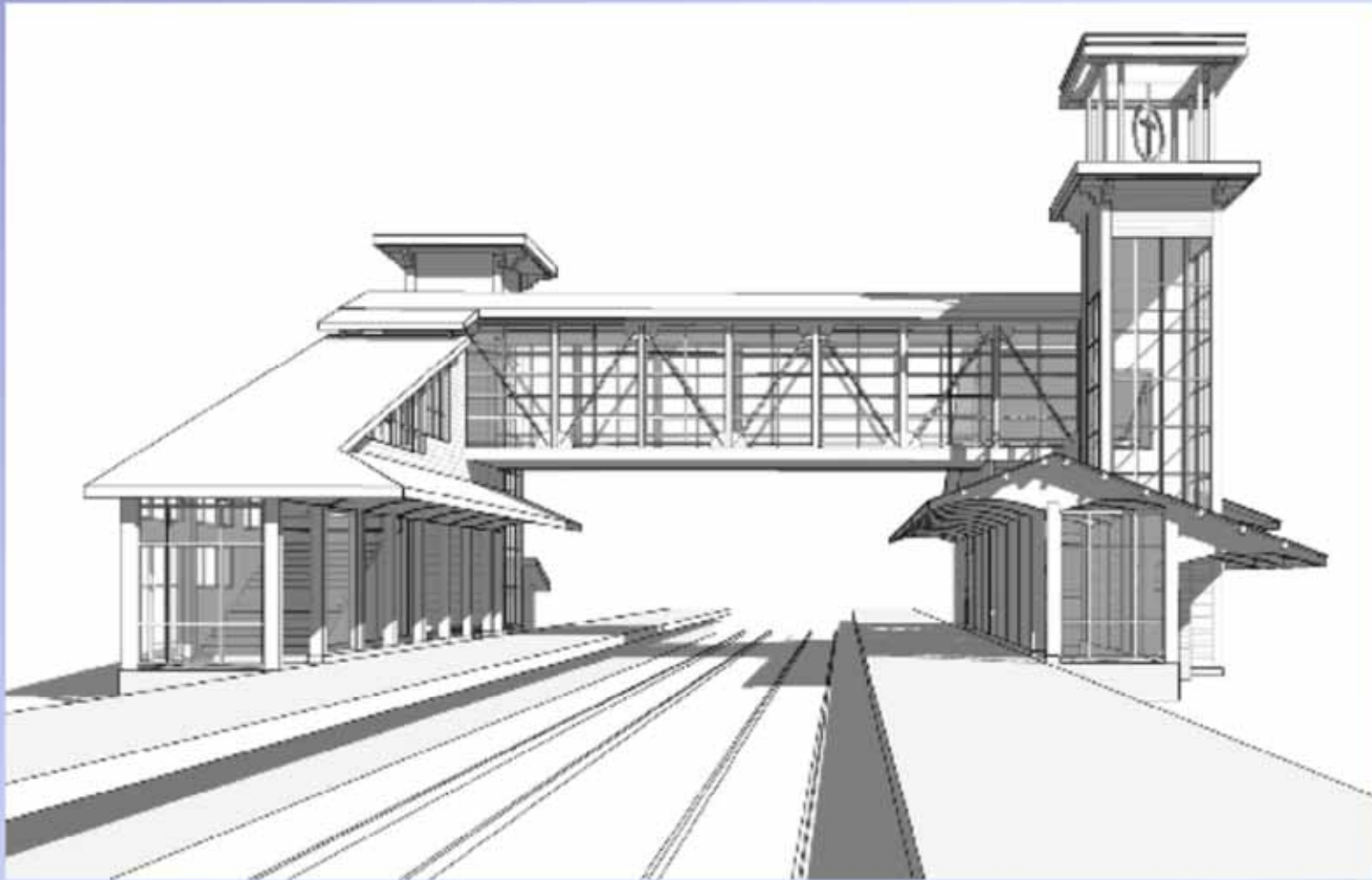
Small Starts Update

- Funding Application submitted to FTA
 - PCGA approved September, 2011
- Permitting
 - Federal and state complete
 - Local WPA complete
- Construction Packages
 - Track & Signal – Jan 2012
 - Bridge – advertise spring 2012
 - South Acton Station – advertise summer 2012



Computer Model - Progress

View to West



April 7, 2011

Computer Model - Progress

North Head House



April 7, 2011



N. Leominster Parking Garage

- Parking demands far exceed current 140 space surface lot
- Construct Garage to accommodate 350 parking spots
- Project Construction: March 2012 – Fall 2013





Wachusett Extension

Design

- Funding Obligated to MBTA
- Updated Permitting in progress
- Layover & Station design – 30%
- Track & Signal work ~ 30%
- Land Acquisition – Q1 2012

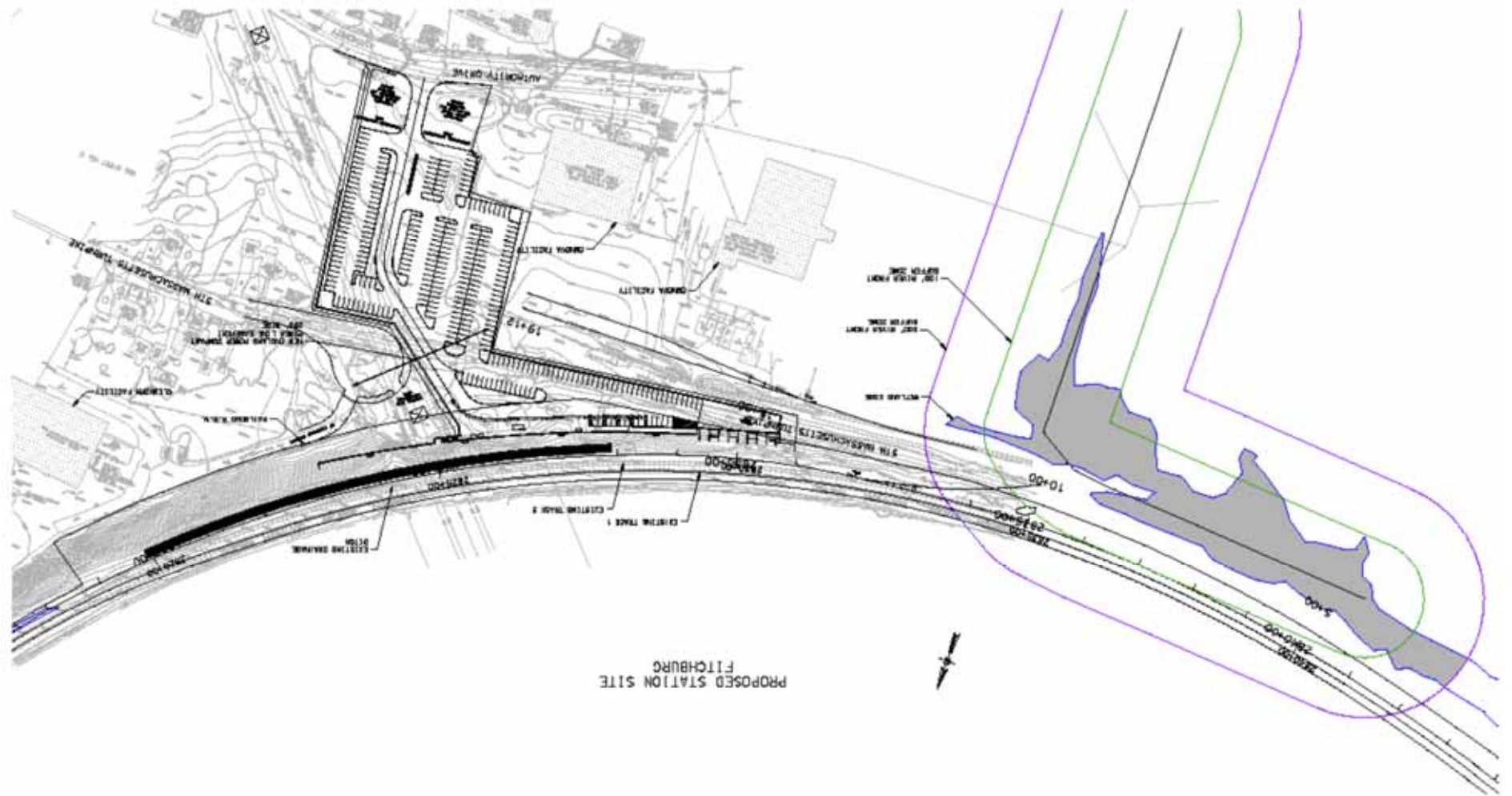
Construction

- Track construction commenced – Fall 2011
- Advertise Station & Layover – Late 2012
- Substantial Project Complete - End 2013



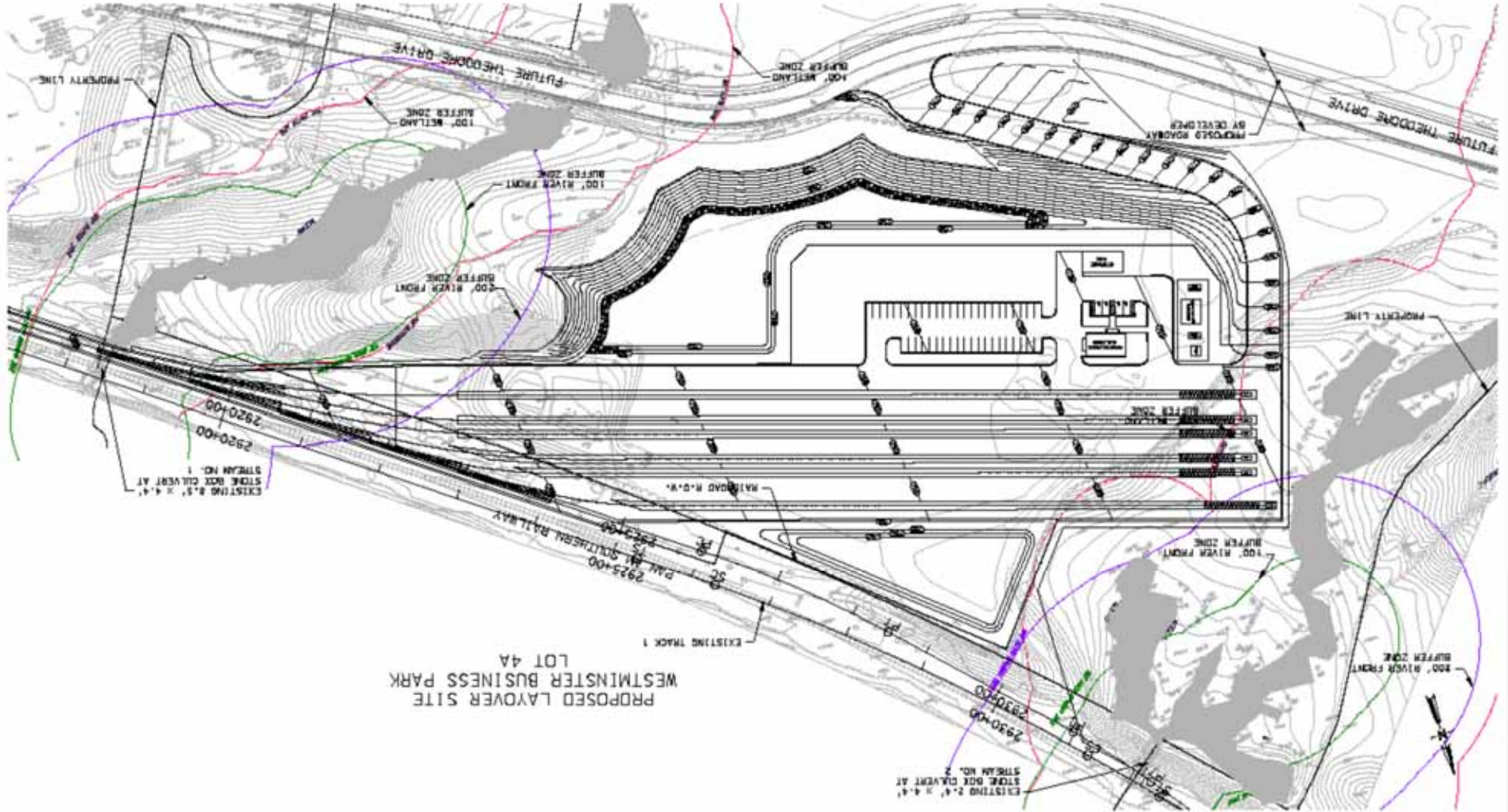


Wachusett Station





Wachusett Layover





Fitchburg

Commuter Rail

Line Improvement Project

Presented by:
HNTB

January, 2012