

DESIGN CONCEPTS

CONCEPT #	DESCRIPTION	PROGRAM		
		<i>PARLIN HOUSE</i>	<i>1976 ADDITION</i>	<i>NEW ADDITON</i>
1	1976 Addition remains	<ul style="list-style-type: none"> ▪ Toilet rooms ▪ Reception/ office ▪ Small meeting ▪ FI 2 storage 	<ul style="list-style-type: none"> ▪ Meeting – 20± persons ▪ FI 2 storage 	NA
2	1976 Addition remains w/ floor 2 removed.	<ul style="list-style-type: none"> ▪ Toilet rooms ▪ Reception/ office ▪ Small meeting ▪ FI 2 storage 	<ul style="list-style-type: none"> ▪ Meeting – 20± persons 	NA
3	1976 Addition removed w/ open air or 3 Season Pavilion added.	<ul style="list-style-type: none"> ▪ Meeting – 33± persons 	NA	<ul style="list-style-type: none"> ▪ Toilet rooms ▪ Meeting – 44± persons

Rehabilitation of the Asa Parlin House

CONCEPT 1

- 1976 addition remains
- Parlin House contains:
 - Toilet rooms
 - Reception/office
 - Small meeting space
 - 2nd floor storage
- 1976 addition contains:
 - Meeting space for 20 +/- persons
 - 2nd floor storage



Rehabilitation of
the ASA PARLIN
HOUSE

(Phase 1B) -
Design Concepts

17 Woodbury Lane,
Acton,
Massachusetts

RED
HAWK
STUDIO
ARCHITECTS, INC.



18 Main Street
Quincy,
Massachusetts
01905
978.389.2340

MARTHA LYON
LANDSCAPE ARCHITECTURE, LLC



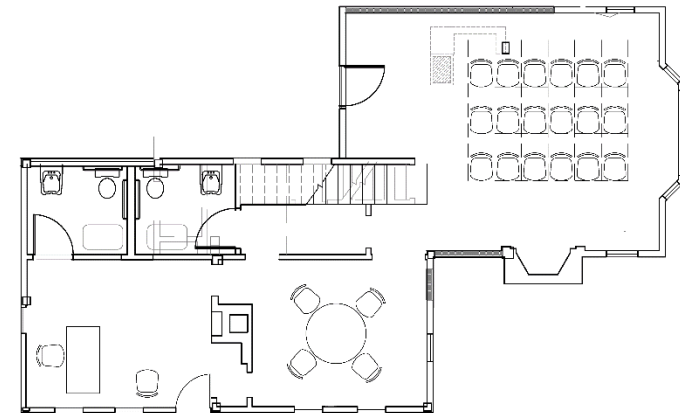
date: november 12, 2020

Revisions

NONE

Preliminary
Concepts 1

Prelim



1" 4" 8"

Concept Plan 1
(1970 Wing Stays)
scale: 1/4"=1'-0"



Rehabilitation of the Asa Parlin House

CONCEPT 2

- 1976 addition remains with 2nd floor removed
- Parlin House contains:
 - Toilet rooms
 - Reception/office
 - 2nd floor storage
- 1976 addition contains:
 - Meeting space for 20 +/- persons
 - 2nd floor storage
 - Small meeting space



Rehabilitation of the ASA PARLIN HOUSE

(Phase 1B) - Design Concepts

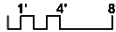
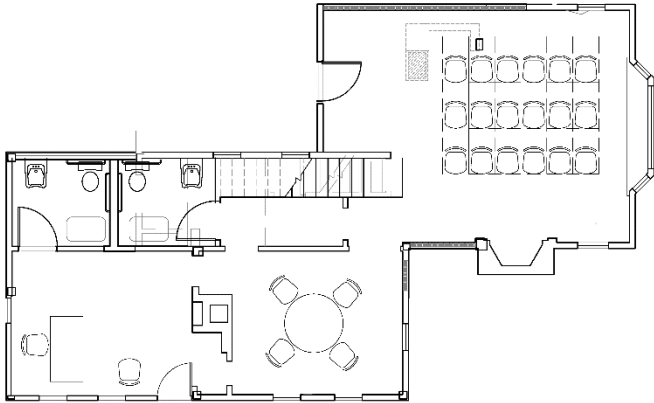
17 Woodbury Lane, Acton, Massachusetts

RED HAWK STUDIO ARCHITECTS, INC.



10 Main Street Concord, Massachusetts 01742 978 389 2100

MARTHA LYON LANDSCAPE ARCHITECTURE, LLC



Concept Plan 1 (1970 Wing Stays) scale: 1/4"=1'-0"



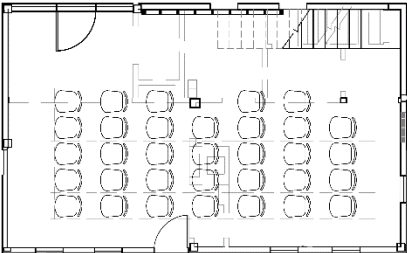
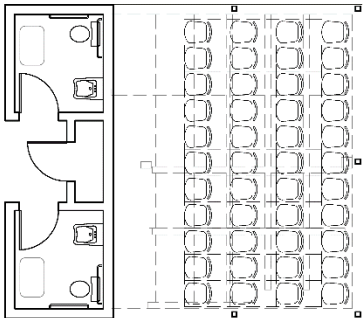
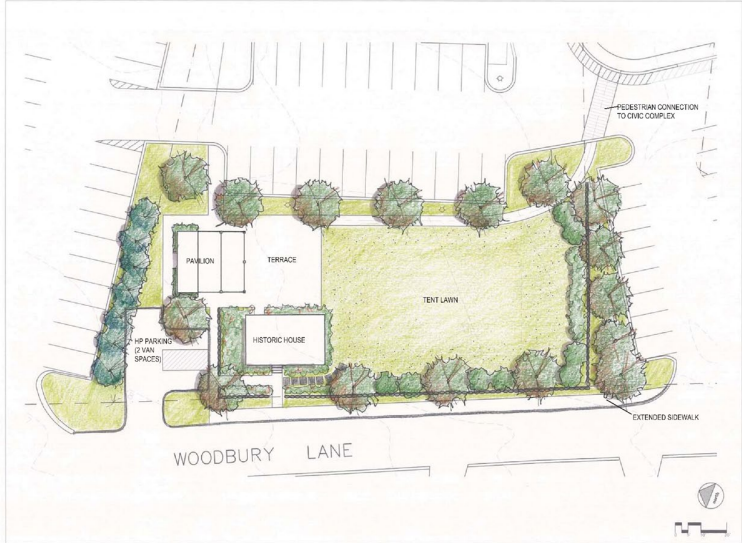
date: november 12, 2020

Revisions
NONE

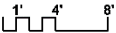
Preliminary Concepts 2

Prelim

CONCEPT 3



- 1976 addition removed with new pavilion added
- Parlin House contains:
 - Meeting space for 33 +/- persons
- New pavilion contains:
 - Toilet rooms
 - Meeting space for 44 +/- persons



Concept Plan 3
(1970 Wing Demo'd;
New Pavilion)
scale: 1/4"=1'-0"



Rehabilitation of the ASA PARLIN HOUSE

(Phase 1B) - Design Concepts

17 Woodbury Lane, Acton, Massachusetts

RED HAWK STUDIO ARCHITECTS, INC.



10 Main Street, Concord, Massachusetts 01742
978 363 2340

MARTHA LYON LANDSCAPE ARCHITECTURE, LLC



date: november 12, 2020

Revisions

NONE

Preliminary Concept 3

Prelim