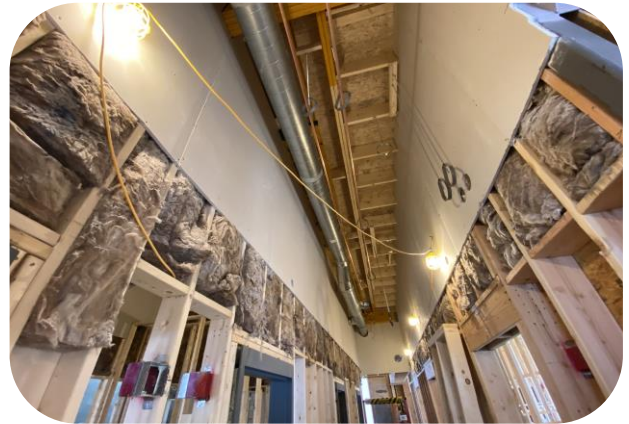




Overview of east side



HVAC ductwork, drywall, and insulation installed in living area on east side of building



Electrical conduit installed in living area



Mechanical pad mark out in mechanical room



Removing scaffolding along Line 5. Line 5 is complete.



Masonry construction on north side of apparatus bay (looking south)



Masonry construction along west side



Masonry construction on north side of apparatus bay (looking north)